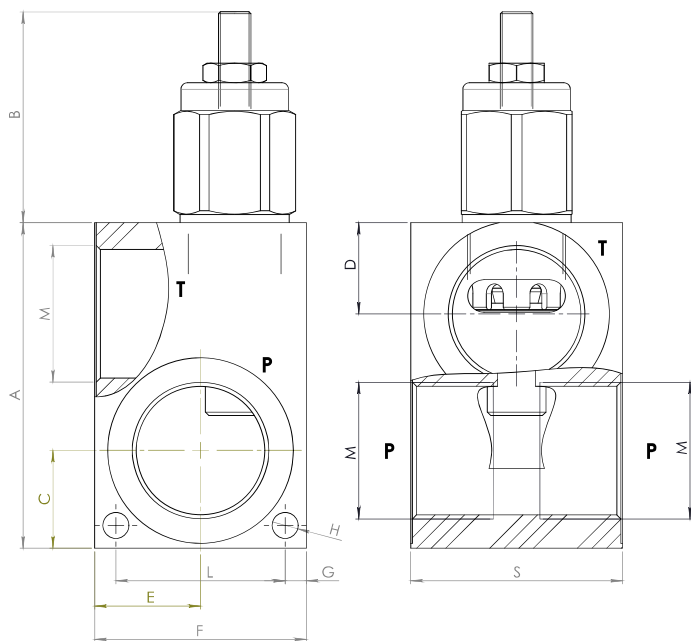
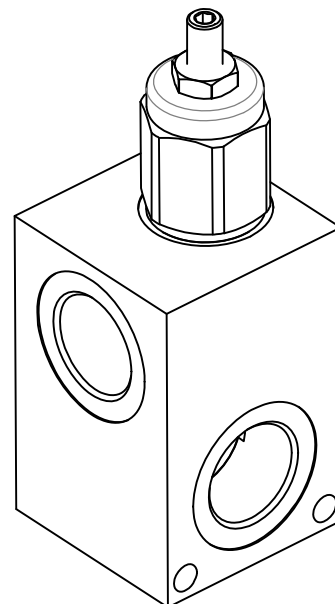


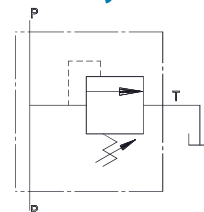
Dimensions



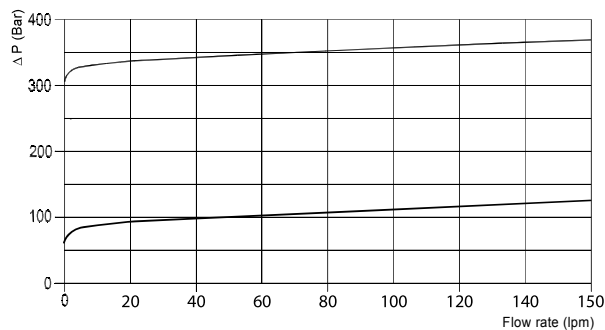
| Size | A | B max | C | D | E | F | G | H | L | M BSP | N | S | Weight kg |
|------|-----|-------|----|----|------|----|-----|---|----|-------|---|----|-----------|
| 05 | 100 | 65 | 30 | 28 | 32,5 | 65 | 6,5 | 8 | 52 | 1 | 7 | 65 | 2,86 |
| 06 | 100 | 65 | 30 | 28 | 32,5 | 65 | 6,5 | 8 | 52 | 1 1/4 | 7 | 65 | 2,54 |



Hydraulic Symbol



Curves



Features

| | |
|--------------|---------|
| Rated Flow | 150 lpm |
| Max Pressure | 350 bar |

Materials: Zinc plated steel cartridge, hardened steel inner parts.
Steel manifold.

Ordering Code

PRL 150

--

--

-




Port Size BSP

| | |
|----|-------|
| 05 | 1 |
| 06 | 1 1/4 |

Spring (bar)

| | |
|----|--------|
| 10 | 5-120 |
| 30 | 50-350 |

Adjustments

| | | |
|---|---|-----------------|
| A |  | Socket Screw |
| B |  | Handknob |
| C |  | Tamperproof Cap |

Ordering Code Example: PRL1500530A = 1 BSP Port Size - 50-350 bar setting range, Socket screw adjustment.